

# The Most Human Bone-like Xenograft Bone Material (Bovine Bone Substitute)

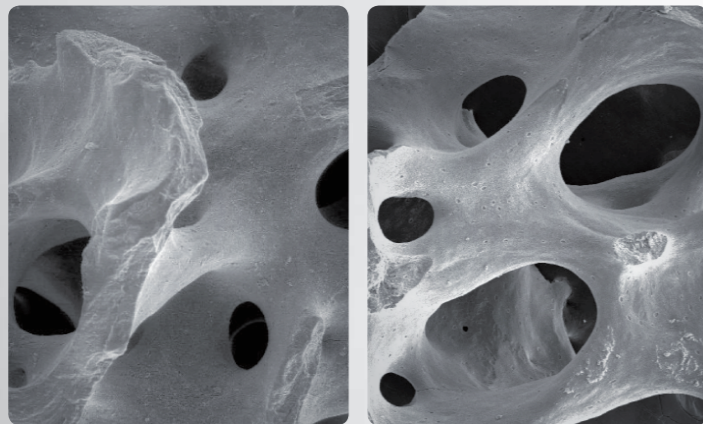
# A-Oss

- Pore and surface structures that facilitate osteogenesis
- Outstanding blood wettability promotes osteogenesis
- Outstanding volume maintaining properties are appropriate for use in esthetic areas

## Pore and Surface Structures that Facilitate Osteogenesis

- Three-dimensional micropores facilitate inflow of blood and
- Rough surface structure helps attachment of abundant osteoblasts

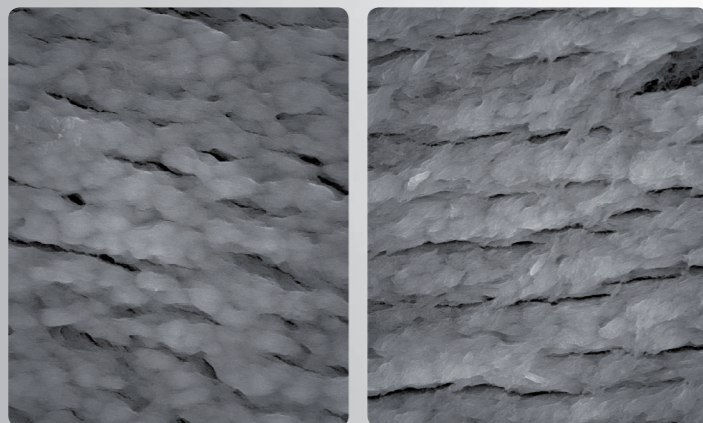
### Pore Structure (x50)



Human Bone

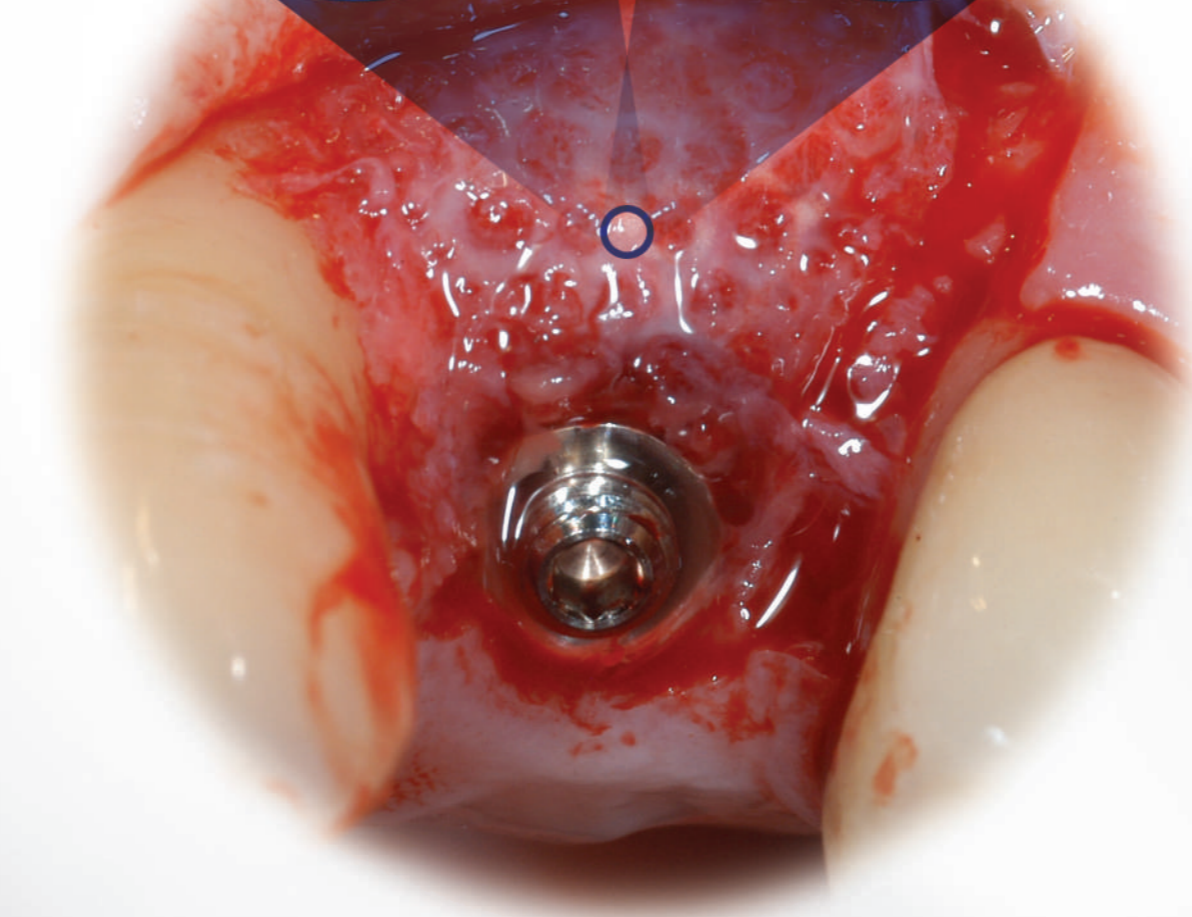
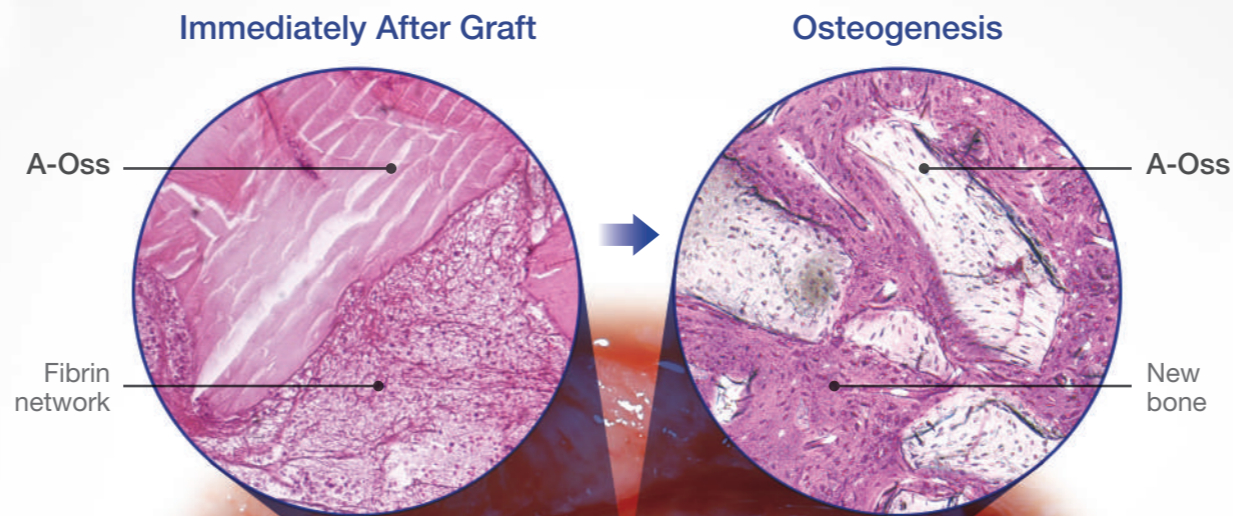
A-Oss

### Surface Structure (x5,000)



Human Bone

A-Oss



## Outstanding Blood Wettability Promotes Osteogenesis

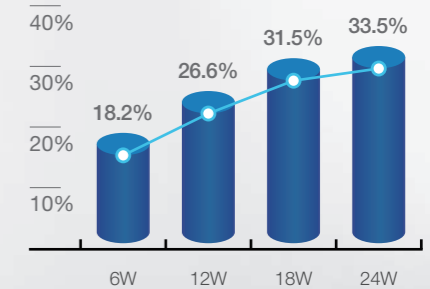
- Outstanding pore structure provides excellent blood wettability
- Osteoblasts in blood forms large quantity of bone

### Blood Permeability



1.0cc of A-Oss can contain 1.0cc of blood

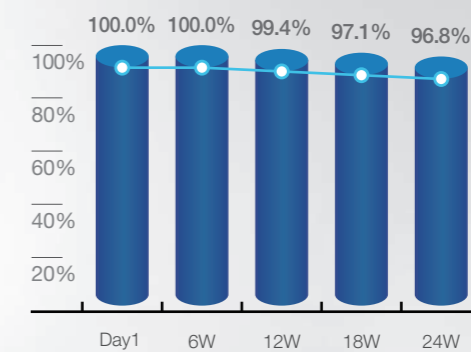
### Osteogenesis



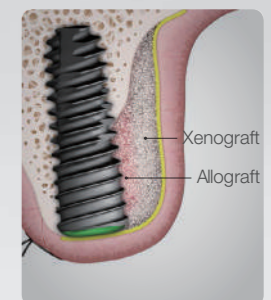
## Outstanding Volume Maintaining Properties are Appropriate for use in Esthetic Areas

- Stable maintenance of blood during osteogenesis period
- Appropriate for anterior part where maintaining volume is critical
- Stable volume maintenance even when used with allograft or synthetic graft

### Change of Graft Volume



### May be Combined with Other Grafts



# Osstem GBR Line-Up

Bone Graft Material				Membrane			Builder			
Allograft		Xenograft		Synthetic Bone Graft		Absorbable	Non-Absorbable	Non-Absorbable		
Powder / Chip	DBM	Block Bone	Powder / Chip	Collagen	Powder / Chip	Collagen	Human Dermis	PTFE	Titanium	
 <b>SureOss</b> Cortical 100%	 <b>SureOss-D</b> Deminerlized cortical 100%	 <b>SureFuse</b> Deminerlized/gel, putty type	 <b>Genesis</b>	 <b>A-Oss</b> Bovine bone	 <b>OssBone</b> Porcine bone	 <b>Q-Oss+</b> TCP 80% + HA 20%	 <b>OssGuide</b> Porcine collagen	 <b>SureDerm</b> Human dermis	 <b>Cytoplast</b> Densd PTFE	 <b>OssBuilder</b> 3D pre-formed titanium membrane
 <b>CANOSS</b> Cancellous 100%	 <b>OsteOss</b> Cortical 50 + cancellous 50%	 <b>ExFuse</b> Deminerlized + cancellous/gel, putty type			 <b>Bongros</b> HA100%		 <b>Cytoplast RTM</b> Bovine collagen			
 <b>Ingross</b> Deminerlized + cortical		 <b>Bellafuse</b> Sheet type, deminerlized								